

SH. 01 OF 01	DRG. NO.	1-383-16-00178
--------------	----------	----------------

SL NO	SYMBOL	DESCRIPTION
1		POWER CABLE (2X2.5 SQ.MM)
2		CONTROL/LOOP CABLE (2X2.5 SQ.MM)
3		OPTICAL FIBER CABLE
4		DIGITAL IIS CABLE
5		HOOTER ALARM SMOKE
6		CONTROL MODULE
7		MONITOR MODULE
8		BACKLIT TYPE EXIT SIGN BOARD
9		MANUAL CALL POINT (INDOOR)
10		MANUAL CALL POINT (FLAMEPROOF)
11		MULTISENSOR DETECTOR WITH RESPONSE INDICATOR (ABOVE FALSE CEILING)
12		MULTISENSOR DETECTOR
13		RATE OF RISE OF TEMPERATURE DETECTOR
14		SPRAY/BEAM DETECTOR
15		HEAT DETECTOR
16		INTRINSICALLY SAFE ROPE DETECTOR
17		INTRINSICALLY SAFE MANUAL CALL POINT
18	BC-1,2	BATTERY CHARGER
19	+BAT-	SMF LEAD ACID BATTERIES
20		DELUGE VALVE LOCAL CONTROL PANEL
21		SIREN
22	MAP	MAIN FIRE ALARM PANEL
23	SRAP	SATELLITE FIRE ALARM PANEL



NOTES:-



- THE FOLLOWING SHALL BE USED IN THE SYSTEM:
1. EACH PAPER OR PAPER LABEL SHALL BE PROVIDED WITH 24 1/2" BATTERY BACKUP, COMPENSATION OF 20,000 CHARGES AND 14,000 CHARGE BATTERIES FOR 10% POWER CHARGES AND 100% IN-CO BATTERIES BE USED.
2. ALL DETECTORS SHALL BE LOGGED AS PER IS 2189.
3. DETECTORS SHALL BE INTERFERED WITH THE ALARM SYSTEM THROUGH CONTROL MODULE (CM).
4. 10% OF EACH LOOP CANNOTY SHALL BE LEFT FREE IN EACH OF THE LOOP FOR FUTURE ADDITION.
5. EACH THE ALARM PANEL LOGGING TO WORK IN CONTROL ROOM AND OPERATIONAL ROOM.
6. SENSIT SHALL HAVE CAPACITY TO COVER 10 KM RANGE AND SHALL BE MONITOR OPERATED WITH THREE PHASE DESIGN.
7. CABLES SHALL BE STRAPPED COOPER COOPER, GND INSULATED, INNER PVC SHEATHED, REMOVED AND OUTER SHEATH OF FALS PVC COMPOUND.

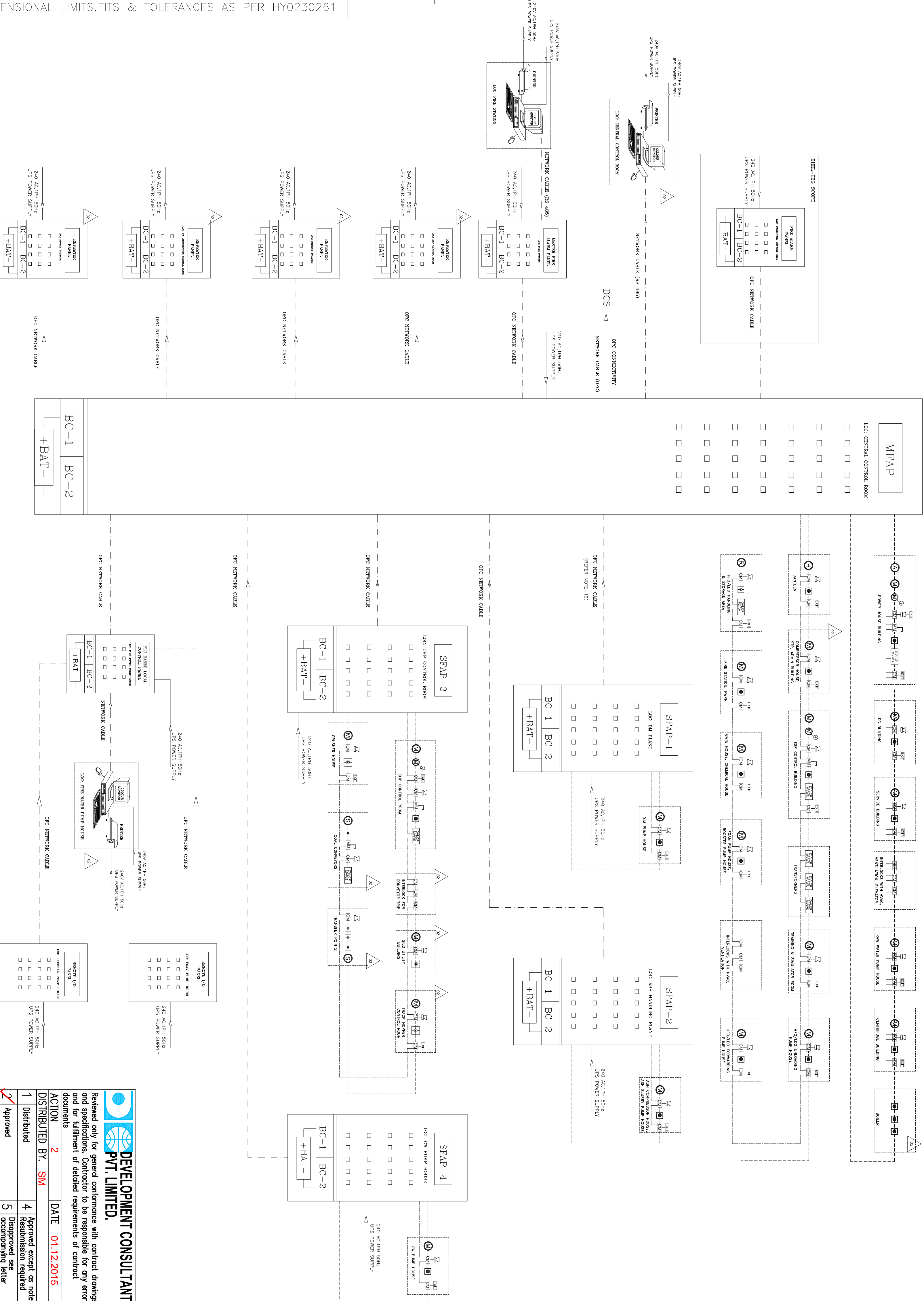
- (c) **100% COVER – 302.2.2.M1F**  
**100% COVER – 302.2.M1F**  
**POWER CABLE – 302.2.M1F**  
 THE PERMANENT ALARM MESSAGES SHALL BE PROVIDED WITH NECESSARY CONTACT / INTERVENE MODELS FOR INITIATING REQUIRED ALARM / OPERATION OF  
 DETECTOR, VENT AND TRIPPING OF HALL, GASOLINE, AIR CONDITION, CONVEYOR MOTOR, ETC.  
 THE NUMBER OF ALARMS AND DETECTORS/CONTACTS ARE INDICATED ONLY. OTHER STRIKES SHALL BE FORMERED DURING PEAK EXPANSION.  
 HALLS SHALL BE PROVIDED FOR ALL TRANSPORTS OF DRINK GREATER THAN 10 MM OR OIL CAPACITY MORE THAN 2000 LITERS.  
 FLAME DETECTORS SHALL BE PROVIDED IN PER 8. 2189  
 SMOKE OR DETECTORS AND MANUAL CALL POINTS SHALL AS PER 8. 2189  
 HORIZONTAL CABLE STRIKES SHALL BE PROVIDED AT ALL FLOOR EXITS.  
 HORIZONTAL CABLE SHALL BE OF THE FOLLOWING CONFIGURATION:-

- (b) 24" MONITOR  
(c) MINIMUM IS PROCESSOR OR EQUIVALENT  
(d) ONE 4 GB RAM  
(e) ONE 500 GB HARD DISK  
(f) UPS FOR PC & PRINTER (20 UNITS ABOVE)  
(g) USER PRINTER, DIRECT KEYBOARD AND OPTICAL MOUSE  
(h) ONE NO. OF MINUTEPAL GAME LAPTOP SHALL BE PROVIDED FOR PROGRAMMING, TROUBLESHOOTING AND ANALYSIS OF FIRE DETECTION & ALARM SYSTEM SHALL BE OF THE FOLLOWING CONFIGURATION:-

- (a) 15' SCREEN WITH TOUCH
  - (b) 7' PROCESSOR OR EQUIVALENT
  - (c) ONE 16 OR 2013 BSM
  - (d) ONE 2" TIE WOOD DOCK
  - (e) ONE 2" TIE WOOD DOCK
- FIRE PROTECTION AND ALARM SYSTEMS: PREPARING TO SWITCHING SHALL BE COVER UNDER BELT, FIRE DOCUMENTATION, BACK UP, DUTY SIGNALS SHALL BE PROVIDED AT ALL BUILDING AND FLOOR EXITS.
3. NO. OF WINDING STAIRS/DRIVER ALTIMETERS (LOCAL HAND) SHALL BE PROVIDED PER EACH CONVEYOR.
- OPTICAL UPS SHALL BE USED FOR COAL CONVEYOR GALLERY INCLUDING BURNERS AND BURN RATE METER. TRANSFER POINTS THIS SHALL BE USED IN WHOLE LENGTH OF TOP BELT AND BOTTOM BELT (IN A ZEP-ZAG PATTERN).
- ALL THE FAN PULLEY, REVERSER PULLEY, OPERATOR ROOM STATIONS SHALL BE CONNECTED BY A DEDICATED FAULT TOLERANT LOCAL AREA NETWORK.
- THE FAN REVERSER REVERSER OPERATOR COMMUNICATION CASE.

PROJECT	 <p>TELANGANA STATE POWER GENERATION CORPORATION LTD.</p>
CUSTOMER	
CUSTOMER'S CONSULTANT	
PROJECT	 <p>DEVELOPMENT CONSULTANTS</p>
1 x 800 MW KOTHA GUDDEM TPS	

		BIHARAT HEAVY ELECTRICALS LTD.		PROJECT ENGS & SYSTEMS DIVISION	
TITLE		HYDROBAD			
SCHEMATIC DIAGRAM FOR					
FIRE DETECTION AND ALARM SYSTEM					
DEPT CODE 480	UNITS DIMS $\phi$ mm	SCALE N.T.S	WEIGHT (KG) N.A.	REF. TO ASSY. DRWG. N.A.	ITEM NO. N.A.
NAME		DATE	NO.	REV.	BY
BN.		BN.	BN.	BN.	BN.
CHD.		CHD.	CHD.	CHD.	CHD.
RAITVATA		RAITVATA	RAITVATA	RAITVATA	RAITVATA
SI		SI	SI	SI	SI
CHD.		CHD.	CHD.	CHD.	CHD.
RAITVATA		RAITVATA	RAITVATA	RAITVATA	RAITVATA
SI		SI	SI	SI	SI
CHD.		CHD.	CHD.	CHD.	CHD.
RAITVATA		RAITVATA	RAITVATA	RAITVATA	RAITVATA
SI		SI	SI	SI	SI
CHD.		CHD.	CHD.	CHD.	CHD.
RAITVATA		RAITVATA	RAITVATA	RAITVATA	RAITVATA
SI		SI	SI	SI	SI
CHD.		CHD.	CHD.	CHD.	CHD.
RAITVATA		RAITVATA	RAITVATA	RAITVATA	RAITVATA
SI		SI	SI	SI	SI
CHD.		CHD.	CHD.	CHD.	CHD.
RAITVATA		RAITVATA	RAITVATA	RAITVATA	RAITVATA
SI		SI	SI	SI	SI
CHD.		CHD.	CHD.	CHD.	CHD.
RAITVATA		RAITVATA	RAITVATA	RAITVATA	RAITVATA
SI		SI	SI	SI	SI
CHD.		CHD.	CHD.	CHD.	CHD.
RAITVATA		RAITVATA	RAITVATA	RAITVATA	RAITVATA
SI		SI	SI	SI	SI
CHD.		CHD.	CHD.	CHD.	CHD.
RAITVATA		RAITVATA	RAITVATA	RAITVATA	RAITVATA
SI		SI	SI	SI	SI
CHD.		CHD.	CHD.	CHD.	CHD.
RAITVATA		RAITVATA	RAITVATA	RAITVATA	RAITVATA
SI		SI	SI	SI	SI
CHD.		CHD.	CHD.	CHD.	CHD.
RAITVATA		RAITVATA	RAITVATA	RAITVATA	RAITVATA
SI		SI	SI	SI	SI
CHD.		CHD.	CHD.	CHD.	CHD.
RAITVATA		RAITVATA	RAITVATA	RAITVATA	RAITVATA
SI		SI	SI	SI	SI
CHD.		CHD.	CHD.	CHD.	CHD.
RAITVATA		RAITVATA	RAITVATA	RAITVATA	RAITVATA
SI		SI	SI	SI	SI
CHD.		CHD.	CHD.	CHD.	CHD.
RAITVATA		RAITVATA	RAITVATA	RAITVATA	RAITVATA
SI		SI	SI	SI	SI
CHD.		CHD.	CHD.	CHD.	CHD.
RAITVATA		RAITVATA	RAITVATA	RAITVATA	RAITVATA
SI		SI	SI	SI	SI
CHD.		CHD.	CHD.	CHD.	CHD.
RAITVATA		RAITVATA	RAITVATA	RAITVATA	RAITVATA
SI		SI	SI	SI	SI
CHD.		CHD.	CHD.	CHD.	CHD.
RAITVATA		RAITVATA	RAITVATA	RAITVATA	RAITVATA
SI		SI	SI	SI	SI
CHD.		CHD.	CHD.	CHD.	CHD.
RAITVATA		RAITVATA	RAITVATA	RAITVATA	RAITVATA
SI		SI	SI	SI	SI
CHD.		CHD.	CHD.	CHD.	CHD.
RAITVATA		RAITVATA	RAITVATA	RAITVATA	RAITVATA
SI		SI	SI	SI	SI
CHD.		CHD.	CHD.	CHD.	CHD.
RAITVATA		RAITVATA	RAITVATA	RAITVATA	RAITVATA
SI		SI	SI	SI	SI
CHD.		CHD.	CHD.	CHD.	CHD.
RAITVATA		RAITVATA	RAITVATA	RAITVATA	RAITVATA
SI		SI	SI	SI	SI
CHD.		CHD.	CHD.	CHD.	CHD.
RAITVATA		RAITVATA	RAITVATA	RAITVATA	RAITVATA
SI		SI	SI	SI	SI
CHD.		CHD.	CHD.	CHD.	CHD.
RAITVATA		RAITVATA	RAITVATA	RAITVATA	RAITVATA
SI		SI	SI	SI	SI
CHD.		CHD.	CHD.	CHD.	CHD.
RAITVATA		RAITVATA	RAITVATA	RAITVATA	RAITVATA
SI		SI	SI	SI	SI
CHD.		CHD.	CHD.	CHD.	CHD.
RAITVATA		RAITVATA	RAITVATA	RAITVATA	RAITVATA
SI		SI	SI	SI	SI
CHD.		CHD.	CHD.	CHD.	CHD.
RAITVATA		RAITVATA	RAITVATA	RAITVATA	RAITVATA
SI		SI	SI	SI	SI
CHD.		CHD.	CHD.	CHD.	CHD.
RAITVATA		RAITVATA	RAITVATA	RAITVATA	RAITVATA
SI		SI	SI	SI	SI
CHD.		CHD.	CHD.	CHD.	CHD.
RAITVATA		RAITVATA	RAITVATA	RAITVATA	RAITVATA
SI		SI	SI	SI	SI
CHD.		CHD.	CHD.	CHD.	CHD.
RAITVATA		RAITVATA	RAITVATA	RAITVATA	RAITVATA
SI		SI	SI	SI	SI
CHD.		CHD.	CHD.	CHD.	CHD.
RAITVATA		RAITVATA	RAITVATA	RAITVATA	RAITVATA
SI		SI	SI	SI	SI
CHD.		CHD.	CHD.	CHD.	CHD.
RAITVATA		RAITVATA	RAITVATA	RAITVATA	RAITVATA
SI		SI	SI	SI	SI
CHD.		CHD.	CHD.	CHD.	CHD.
RAITVATA		RAITVATA	RAITVATA	RAITVATA	RAITVATA
SI		SI	SI	SI	SI
CHD.		CHD.	CHD.	CHD.	CHD.
RAITVATA		RAITVATA	RAITVATA	RAITVATA	RAITVATA
SI		SI	SI	SI	SI
CHD.		CHD.	CHD.	CHD.	CHD.
RAITVATA		RAITVATA	RAITVATA	RAITVATA	RAITVATA
SI		SI	SI	SI	SI
CHD.		CHD.	CHD.	CHD.	CHD.
RAITVATA		RAITVATA	RAITVATA	RAITVATA	RAITVATA
SI		SI	SI	SI	SI
CHD.		CHD.	CHD.	CHD.	CHD.
RAITVATA		RAITVATA	RAITVATA	RAITVATA	RAITVATA
SI		SI	SI	SI	SI
CHD.		CHD.	CHD.	CHD.	CHD.
RAITVATA		RAITVATA	RAITVATA	RAITVATA	RAITVATA
SI		SI	SI	SI	SI
CHD.		CHD.	CHD.	CHD.	CHD.
RAITVATA		RAITVATA	RAITVATA	RAITVATA	RAITVATA
SI		SI	SI	SI	SI
CHD.		CHD.	CHD.	CHD.	CHD.
RAITVATA		RAITVATA	RAITVATA	RAITVATA	RAITVATA
SI		SI	SI	SI	SI
CHD.		CHD.	CHD.	CHD.	CHD.
RAITVATA		RAITVATA	RAITVATA	RAITVATA	RAITVATA
SI		SI	SI	SI	SI
CHD.		CHD.	CHD.	CHD.	CHD.
RAITVATA		RAITVATA	RAITVATA	RAITVATA	RAITVATA
SI		SI	SI	SI	SI
CHD.		CHD.	CHD.	CHD.	CHD.
RAITVATA		RAITVATA	RAITVATA	RAITVATA	RAITVATA
SI		SI	SI	SI	SI
CHD.		CHD.	CHD.	CHD.	CHD.
RAITVATA		RAITVATA	RAITVATA	RAITVATA	RAITVATA
SI		SI	SI	SI	SI
CHD.		CHD.	CHD.	CHD.	CHD.
RAITVATA		RAITVATA	RAITVATA	RAITVATA	RAITVATA
SI		SI	SI	SI	SI
CHD.		CHD.	CHD.	CHD.	CHD.
RAITVATA		RAITVATA	RAITVATA	RAITVATA	RAITVATA
SI		SI	SI	SI	SI
CHD.		CHD.	CHD.	CHD.	CHD.
RAITVATA		RAITVATA	RAITVATA	RAITVATA	RAITVATA
SI		SI	SI	SI	SI
CHD.		CHD.	CHD.	CHD.	CHD.
RAITVATA		RAITVATA	RAITVATA	RAITVATA	RAITVATA
SI		SI	SI	SI	SI
CHD.		CHD.	CHD.	CHD.	CHD.
RAITVATA		RAITVATA	RAITVATA	RAITVATA	RAITVATA
SI		SI	SI	SI	SI
CHD.		CHD.	CHD.	CHD.	CHD.
RAITVATA		RAITVATA	RAITVATA	RAITVATA	RAITVATA
SI		SI	SI	SI	SI
CHD.		CHD.	CHD.	CHD.	CHD.
RAITVATA		RAITVATA	RAITVATA	RAITVATA	RAITVATA
SI		SI	SI	SI	SI
CHD.		CHD.	CHD.	CHD.	CHD.
RAITVATA		RAITVATA	RAITVATA	RAITVATA	RAITVATA
SI		SI	SI	SI	SI
CHD.		CHD.	CHD.	CHD.	CHD.
RAITVATA		RAITVATA	RAITVATA	RAITVATA	RAITVATA
SI		SI	SI	SI	SI
CHD.		CHD.	CHD.	CHD.	CHD.
RAITVATA		RAITVATA	RAITVATA	RAITVATA	RAITVATA
SI		SI	SI	SI	SI
CHD.		CHD.	CHD.	CHD.	CHD.
RAITVATA		RAITVATA	RAITVATA	RAITVATA	RAITVATA
SI		SI	SI	SI	SI
CHD.		CHD.	CHD.	CHD.	CHD.
RAITVATA		RAITVATA	RAITVATA	RAITVATA	RAITVATA
SI		SI	SI	SI	SI
CHD.		CHD.	CHD.	CHD.	CHD.
RAITVATA		RAITVATA	RAITVATA	RAITVATA	RAITVATA
SI		SI	SI	SI	SI
CHD.		CHD.	CHD.	CHD.	CHD.
RAITVATA		RAITVATA	RAITVATA	RAITVATA	RAITVATA
SI		SI	SI	SI	SI
CHD.		CHD.	CHD.	CHD.	CHD.
RAITVATA		RAITVATA	RAITVATA	RAITVATA	RAITVATA
SI		SI	SI	SI	SI
CHD.		CHD.	CHD.	CHD.	CHD.
RAITVATA		RAITVATA	RAITVATA	RAITVATA	RAITVATA
SI		SI	SI	SI	SI
CHD.		CHD.	CHD.	CHD.	CHD.
RAITVATA		RAITVATA	RAITVATA	RAITVATA	RAITVATA
SI		SI	SI	SI	SI
CHD.		CHD.	CHD.	CHD.	CHD.
RAITVATA		RAITVATA	RAITVATA	RAITVATA	RAITVATA
SI		SI	SI	SI	SI
CHD.		CHD.	CHD.	CHD.	CHD.
RAITVATA		RAITVATA	RAITVATA	RAITVATA	RAITVATA
SI		SI	SI	SI	SI
CHD.		CHD.	CHD.	CHD.	CHD.
RAITVATA		RAITVATA	RAITVATA	RAITVATA	RAITVATA
SI		SI	SI	SI	SI
CHD.		CHD.	CHD.	CHD.	CHD.
RAITVATA		RAITVATA	RAITVATA	RAITVATA	RAITVATA
SI		SI	SI	SI	SI
CHD.		CHD.	CHD.	CHD.	CHD.
RAITVATA		RAITVATA	RAITVATA	RAITVATA	RAITVATA
SI		SI	SI	SI	SI
CHD.		CHD.	CHD.	CHD.	CHD.
RAITVATA		RAITVATA	RAITVATA	RAITVATA	RAITVATA
SI		SI	SI	SI	SI
CHD.		CHD.	CHD.	CHD.	CHD.
RAITVATA		RAITVATA	RAITVATA	RAITVATA	RAITVATA
SI		SI	SI	SI	SI
CHD.		CHD.	CHD.	CHD.	CHD.
RAITVATA		RAITVATA	RAITVATA	RAITVATA	RAITVATA
SI		SI	SI	SI	SI
CHD.		CHD.	CHD.	CHD.	CHD.
RAITVATA		RAITVATA	RAITVATA	RAITVATA	RAITVATA
SI		SI	SI	SI	SI
CHD.		CHD.	CHD.	CHD.	CHD.
RAITVATA		RAITVATA	RAITVATA	RAITVATA	RAITVATA
SI		SI	SI	SI	SI
CHD.		CHD.	CHD.	CHD.	CHD.
RAITVATA		RAITVATA	RAITVATA	RAITVATA	RAITVATA
SI		SI	SI	SI	SI
CHD.		CHD.	CHD.	CHD.	CHD.
RAITVATA		RAITVATA	RAITVATA	RAITVATA	RAITVATA
SI		SI	SI	SI	SI
CHD.		CHD.	CHD.	CHD.	CHD.
RAITVATA		RAITVATA	RAITVATA	RAITVATA	RAITVATA
SI		SI	SI	SI	SI
CHD.		CHD.	CHD.	CHD.	CHD.
RAITVATA		RAITVATA	RAITVATA	RAITVATA	RAITVATA
SI		SI	SI	SI	SI
CHD.		CHD.	CHD.	CHD.	CHD.
RAITVATA		RAITVATA	RAITVATA	RAITVATA	RAITVATA
SI		SI	SI	SI	SI
CHD.		CHD.	CHD.	CHD.	CHD.
RAITVATA		RAITVATA	RAITVATA	RAITVATA	RAITVATA
SI		SI	SI	SI	SI
CHD.		CHD.	CHD.	CHD.	CHD.
RAITVATA		RAITVATA	RAITVATA	RAITVATA	RAITVATA
SI		SI	SI	SI	SI
CHD.		CHD.	CHD.	CHD.	CHD.
RAITVATA		RAITVATA	RAITVATA	RAITVATA	RAITVATA
SI		SI	SI	SI	SI
CHD.		CHD.	CHD.	CHD.	CHD.
RAITVATA		RAITVATA	RAITVATA	RAITVATA	RAITVATA
SI		SI	SI	SI	SI
CHD.		CHD.	CHD.	CHD.	CHD.
RAITVATA		RAITVATA	RAITVATA	RAITVATA	RAITVATA
SI		SI	SI	SI	SI
CHD.		CHD.	CHD.	CHD.	CHD.
RAITVATA		RAITVATA	RAITVATA	RAITVATA	RAITVATA
SI		SI	SI	SI	SI
CHD.		CHD.	CHD.	CHD.	CHD.
RAITVATA		RAITVATA	RAITVATA	RAITVATA	RAITVATA
SI		SI	SI	SI	SI
CHD.		CHD.	CHD.	CHD.	CHD.
RAITVATA		RAITVATA	RAITVATA	RAITVATA	RAITVATA
SI		SI	SI	SI	SI
CHD.		CHD.	CHD.	CHD.	CHD.
RAITVATA		RAITVATA	RAITVATA	RAITVATA	RAITVATA
SI		SI	SI	SI	SI
CHD.		CHD.	CHD.	CHD.	CHD.
RAITVATA		RAITVATA	RAITVATA	RAITVATA	RAITVATA
SI		SI	SI	SI	SI
CHD.		CHD.	CHD.	CHD.	CHD.
RAITVATA		RAITVATA	RAITVATA	RAITVATA	RAITVATA
SI		SI	SI	SI	SI
CHD.		CHD.	CHD.	CHD.	CHD.
RAITVATA		RAITVATA	RAITVATA	RAITVATA	RAITVATA
SI		SI	SI	SI	SI
CHD.		CHD.	CHD.	CHD.	CHD.
RAITVATA		RAITVATA	RAITVATA	RAITVATA	RAITVATA
SI		SI	SI	SI	SI
CHD.		CHD.	CHD.	CHD.	CHD.
RAITVATA		RAITVATA	RAITVATA	RAITVATA	RAITVATA
SI		SI	SI	SI	SI
CHD.		CHD.	CHD.	CHD.	CHD.
RAITVATA		RAITVATA	RAITVATA	RAITVATA	RAITVATA
SI		SI	SI	SI	SI
CHD.		CHD.	CHD.	CHD.	CHD.
RAITVATA		RAITVATA	RAITVATA	RAITVATA	RAITVATA
SI		SI	SI	SI	SI
CHD.		CHD.	CHD.	CHD.	CHD.
RAITVATA		RAITVATA	RAITVATA		



GENERAL DISPOSITION									
ALTERED	REV.	DATE	ALTERED	REV.	DATE	ALTERED	REV.	DATE	ALTERED
CHD/APPD			CHD/APPD			CHD/APPD			CHD/APPD
	ZONE			ZONE					

REV.	DATE	ALTERED	REV.	DATE	ALTERED	REV.	DATE
		CHD/APPD			CHD/APPD		
ZONE			ZONE			ZONE	

3	Approved except as forward this drawing
SEE COVERIN	
LETTER REF NO. 085	

6	For information only
TER	
DATE	01.12.2015

PROJECT		1 x 800 MM KOTHAGUDUM TPS	
			
BHARAT HEAVY ELECTRICALS LTD. HYDERABAD PROJECT ENG & SYSTEMS DIVISION			
	DEPT CODE 450	UNTO. DMS. 01/01/17	
SCALE		N.T.S	
WEIGHT (KG)		N.A.	
REF. TO ASBY. Dwg.		N.A.	
ITEM NO.		N.A.	
NO. OF PAGES		N.A.	
DATE		N.A.	
SIGN.		N.A.	
NAME		N.A.	
FORNUNA		N.A.	
CNO		N.A.	
RAVATEJA		N.A.	
K. GUNJANI		N.A.	
APPD		N.A.	
Dwg. No. 1 - 383 - 16 - 00178		N.A.	
CAGE CODE		N.A.	
SHT. No. 01		N.A.	
No. of Sht. of Size - 0		N.A.	

THE INFORMATION ON THIS DOCUMENT IS THE PROPERTY OF BHARAT HEAVY ELECTRICALS LIMITED. IT MUST NOT BE USED DIRECTLY OR INDIRECTLY IN ANY WAY DETRIMENTAL TO THE INTEREST OF THE COMPANY